

Estimate Name

Example 1

Estimate Date

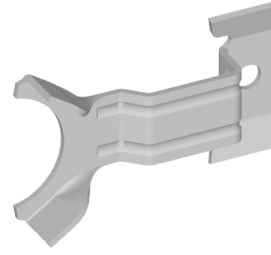
01/23/2024

Estimated By

demo@dieestimator.com

Customer

Automotive OEM Inc.



Production Part

File Name

Part Name

Belt Guide

Part Type

Cut and Bend

Material Type

Steel - HSS High Strength 60ksi (400 Mpa)

Material

Thickness

0.032 in

Die

Die Type

Progressive Die

Die construction

A Class Die (High Production)

Parts Per Stroke

1

Stations

12

Part or Stock Width

5.81 in

Part or Stock Length

2.89 in

Blank Weight

0.15 lb

Die Step

2.89 in

Number of die sets

1

Die size LR

38.70 in

Die size FB

18.81 in

Shut Height

20.00 in

Die Tonnage

19 UST

Die Cost

Material Cost

\$ 13,705

Hours

603 hrs

Labor Rate

USA Cost (flat)

Labor Cost

\$ 46,769

Profit

\$ 21,567

Total

\$ 82,041

Part Cost

Material Cost

\$ 0.092

Setup Cost

\$ 0.006

Run Cost

\$ 0.035

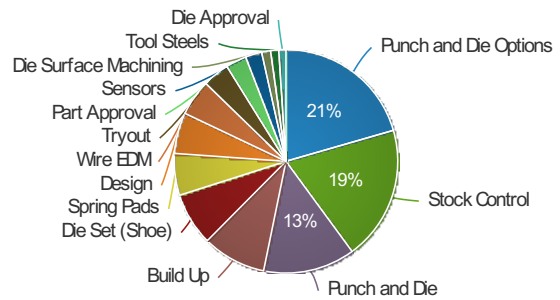
Total Cost

\$ 0.133

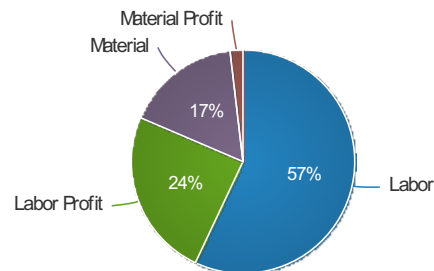
Tool Amortization

\$ 0.410

Die Cost



Die Material, Labor, and Profit



Production Part Costs

